



M&I  
Caldeiraria

[www.meicaldeiraria.com.br](http://www.meicaldeiraria.com.br)





# Company

Founded in 2007, M&I Caldeiraria, located in Votorantim in a 10,000m<sup>2</sup> industrial area, stands out for its specialized services in cutting, bending, welding, machining, shotblasting, painting, and assembly.

Our differential lies in the advanced technology of CNC equipment, with emphasis on the 15kW laser cutting machine. Additionally, we have state-of-the-art measuring devices, ensuring precision and efficiency in every project.

*Excellence is our motto*





## Mission

Meet the demands with constant quality with excellence, maintaining the agreed specifications satisfying the expectations of the customers.



## Vision

To be a reference company in the market, which constantly seeks consolidated methods aimed at improving the production stages, the total efficiency of its employees and the application of the most current control techniques.



## Values

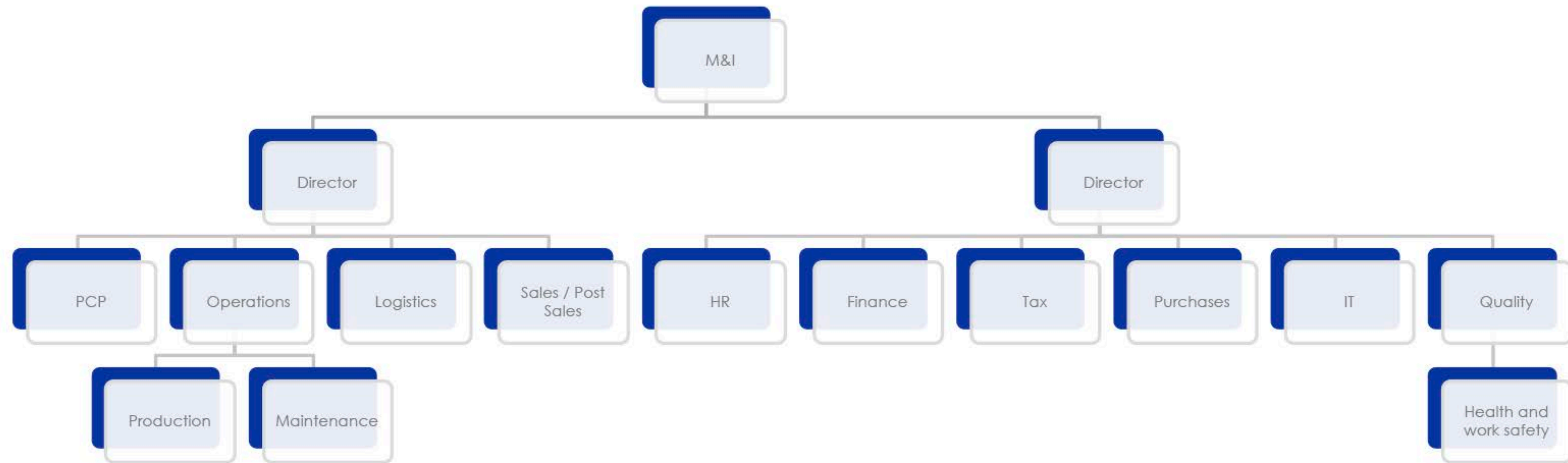
Transparency, Integrity, Commitment, Training, Human Appreciation, Continuous Improvement.

# Quality policy

Through the Management and its employees, M&I Caldeiraria seeks to transform its customers' ideas and projects into products based on the quality of its services. For this, it is committed to:

- We meet our clients needs and expectations, achieving satisfaction.
- Create an environment that encourages quality through:
  - Adequate infrastructure;
  - Awareness and training;
  - Competence of employees;
- Promote continuous improvements in the Quality Management System.
- Seeking continuous improvement, always attending:
  - Our client`s and legal requirements
  - Contract agreeded schedules

# ORGANOGRAM FUNCTIONAL





# Production capacity



300 tons of steel/month  
Control by **PPAP**

# Workers



Over 50 employees



An aerial photograph of an industrial complex, possibly a manufacturing or storage facility. The image shows several large, light-colored buildings with flat roofs, arranged around a central paved area. There are some smaller structures and what appears to be a loading dock or entrance area. The overall scene is industrial and somewhat desolate, with some vegetation visible in the foreground and background. The image is overlaid with a semi-transparent blue filter.

# Machines and Equipaments



# CNC Laser cutting machine

CNC Laser cutting machine, 15.000W with 45° angle bevel cut - 2.50m by 6.00m table - able to cut sheets with thickness up to 50mm

Raw material: Carbon steel, stainless steel, aluminum, bronze



# CNC oxycutting machine

CNC oxycutting machine - 3.00m x 7.00m table - able to cut sheets with thickness up to 200mm

# Plasma cutting machine

High definition 200A Plasma CNC cutting machine - 3.00m x 16.00m table - able to cut sheets with thickness up to 38mm





# Manual cutting machine

Able to cut sheets with thickness up to 3.2mm

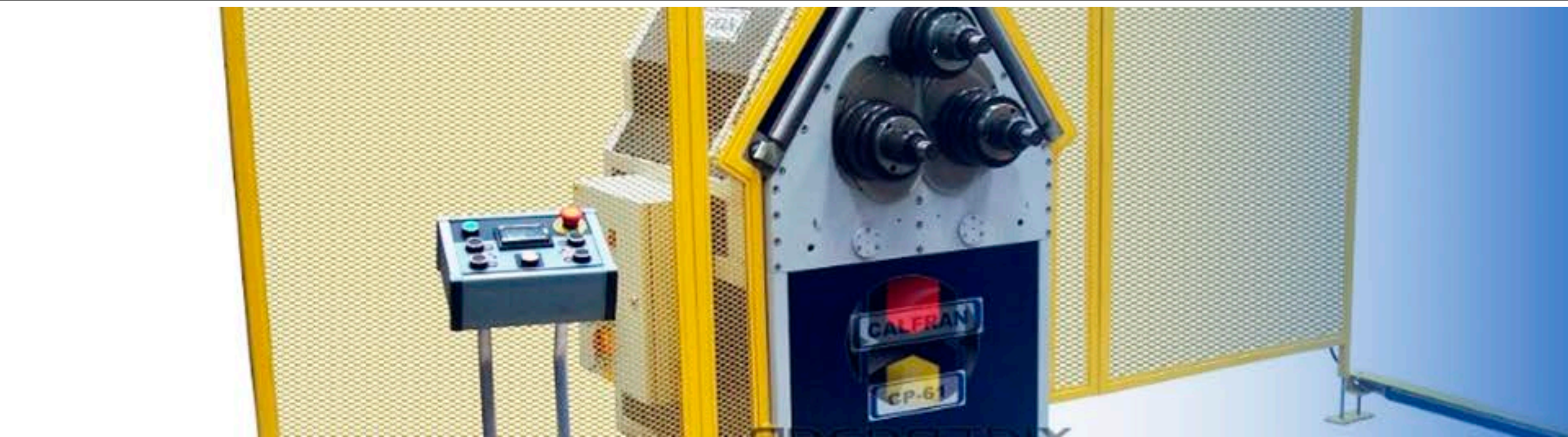
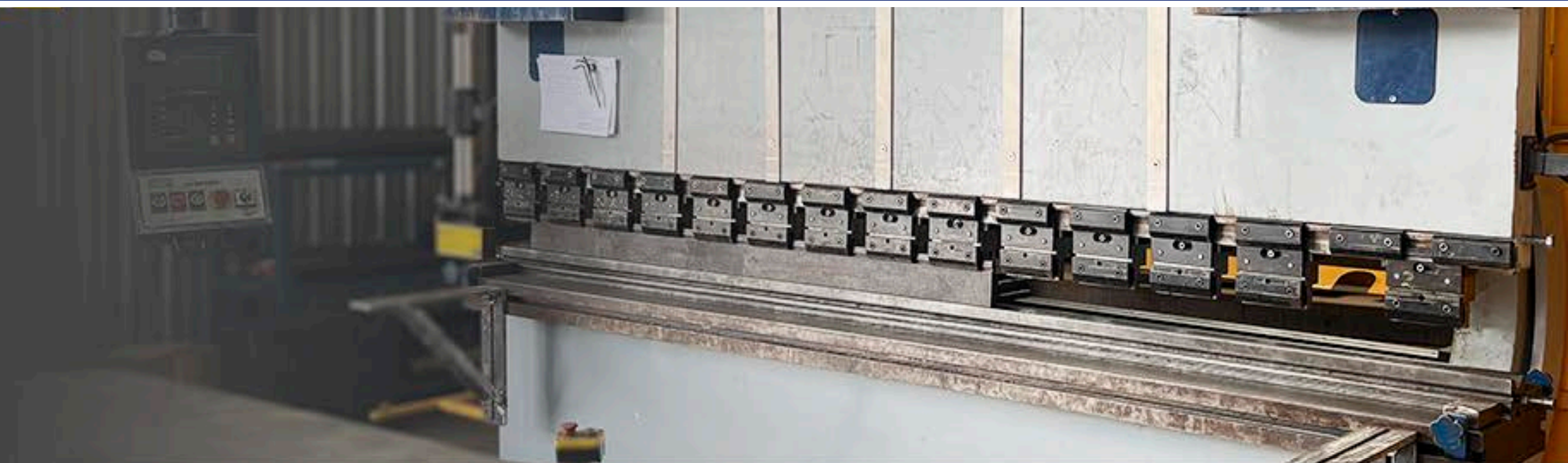


# Manual cutting machine for tubes and profiles

Precision cutting machine for steel shapes: round, square, flat and angle shapes

# CNC Hydraulic bending machine

330ton force, bending sheets with 13mm thickness and 3.50m wide



# Hydraulic calender machine for profiles

Hydraulic calender machine for profiles with 75ton capacity



# Horizontal boring Mills (small and medium size)

**Medium size:** 6ton capacity, 0,01mm precision.  
Axes Range: X - 2785mm; Y - 1929mm; Z - 1426mm.

**Small size:** 4ton capacity, 0,01mm precision  
Axes Range: X - 1320mm; Y - 1180mm; Z - 1170mm.

## Radial drilling machine

6ton capacity, 0,01mm precision  
Axes Ranges: X - 1500mm; Y - 1000mm.

## Horizontal milling

300kg capacity, 0,01mm precision  
Axes Ranges: X - 1000mm; Y - 400mm; Z - 500mm.

## Sheets calender

Sheets calender with capacity for sheets 22mm thick and 3.0m length



# Lathe machine

- Usable Diameter over Bed: 401 to 500mm.
- Usable Diameter over Carriage: 201 to 400mm.
- Maximum Usable Length: 601 to 1,200mm.
- Spindle Bore Diameter: 41 to 60mm.

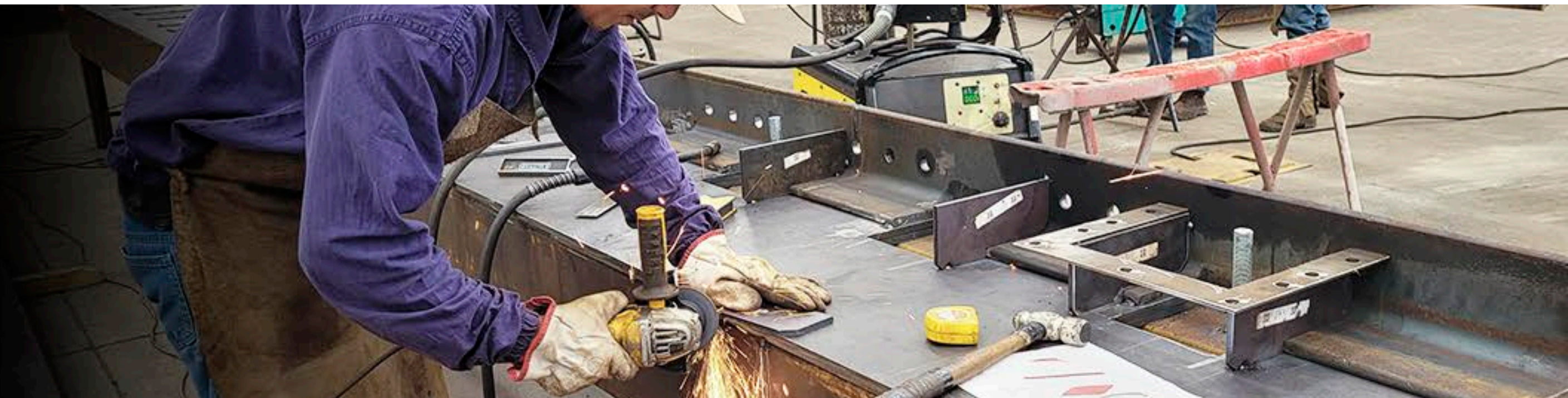


## Quality Control

- Three-dimensional arm with a 3m reach
- Laser level
- Altitude meters
- Planing table
- Calliper
- Micrometers

## Welding services

- Assembly
- 28 Welding Machines – Mig, Mag, and Tig
- Assembly templates for welding
- Measurement instruments
- Mechanical assembly
- Finishing



## Non-destructive testing

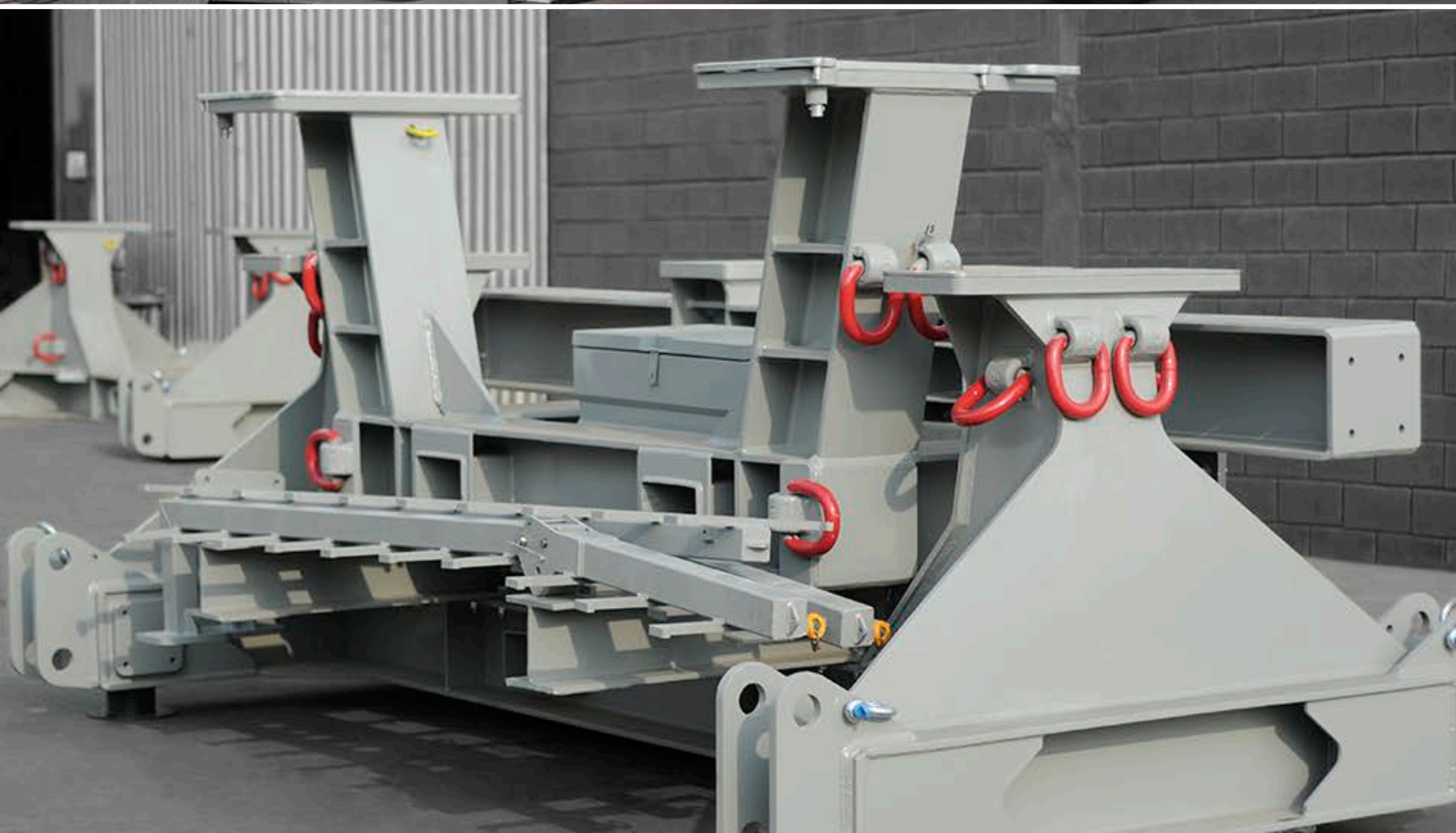
- Penetrant Test
- Visual Test
- Load testing



An aerial photograph of an industrial facility, featuring several large, interconnected warehouse-like buildings with corrugated metal roofs. The foreground shows a paved area with some equipment and materials. The entire image is overlaid with a semi-transparent blue filter. Centered over the image is the text 'Services portfolio' in a white, sans-serif font, flanked by horizontal lines.

# Services portfolio















# CLIENTS

---

***Vestas***

GRUPO  
**DELGA**  
Integrando Soluções

**Magno  
Pecas**

